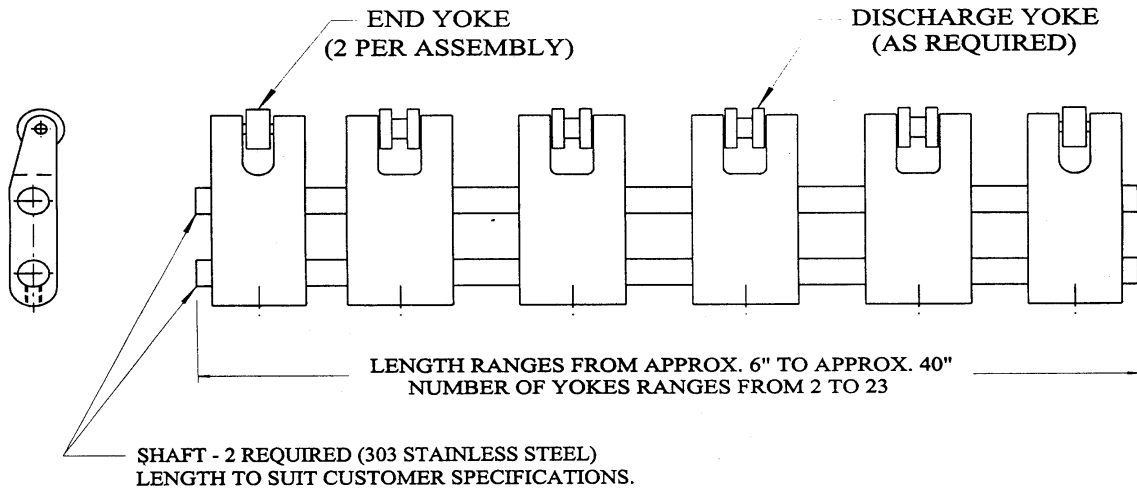
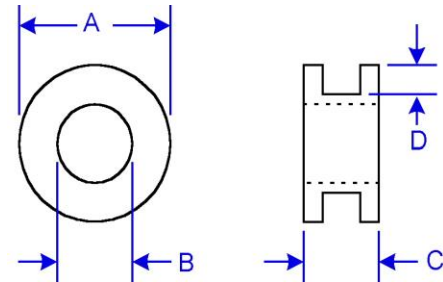


Flexx Flow Discharge Yoke Assembly

800.367.3664



	"A" Diameter	"B" Bore	"C" Face Width	"D" Groove Depth	Corresponding End Roller
DR7563-1	.750"	.1875"	.625"	.1875"	ER7563-2
DR10075-1	1.00"	.250"	.750"	.250"	ER10075-2
DR11851-1	1.18"	.315"	.510"	.275"	ER11851-2
DR12575-1	1.25"	.500"	.750"	.230"	ER12575-2



Use the above chart to determine the correct discharge rollers for the belt specification.
Consult Lumsden sales department for metric belt specifications.

FLEXX Flow Discharge & End Rollers

	1/8 x .050	1/4" x .050	1/4" x .050	3/8" x .050	3/8" x .062	3/8" x .082	1/2" x .072	1/2" x .092
DR7563-1	x	x	x	x	x			
DR10075-1	x	x	x	x	x	x		
DR11851-1	x	x	x	x	x	x	x	x
DR12575-1	x	x	x	x	x	x	x	x

LUMSDEN BELTING

Wiremation Conveyor Belting
Lumsden Flexx Flow Inc.

717.394.6871 800.367.3664

www.LumsdenBelting.com